

Has the Day Invaded the Night, or Has the Night Invaded the Day?, no. 5 of 9, from the series, What Is the Shape of This Problem?, Louise Bourgeois (1999)

Veranstaltungen

Thursdays, Atelier F400

Modulverantwortung: Felix Wettstein, Ludovica Molo

Lehrteam: Felix Wettstein, Ludovica Molo

Assistant: Qendrim Gashi

What is the shape of this problem?

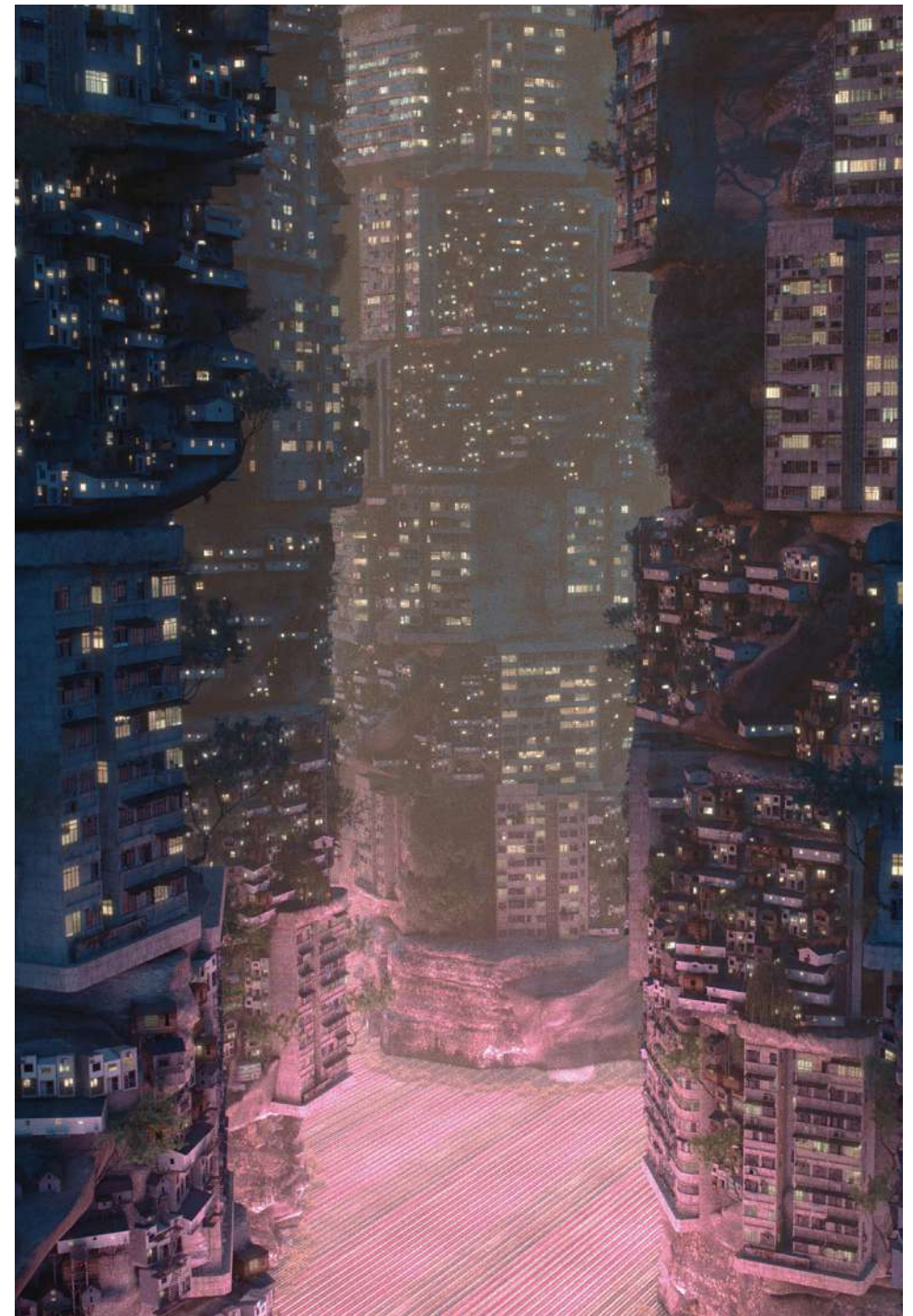
The Uncertain Future of the vbl-Areal at Tribtschen, Lucerne

'What is the shape of this problem?' is a question presented on the opening page of a series of nine letterpress diptychs of image and text produced by Louise Bourgeois in 1999.

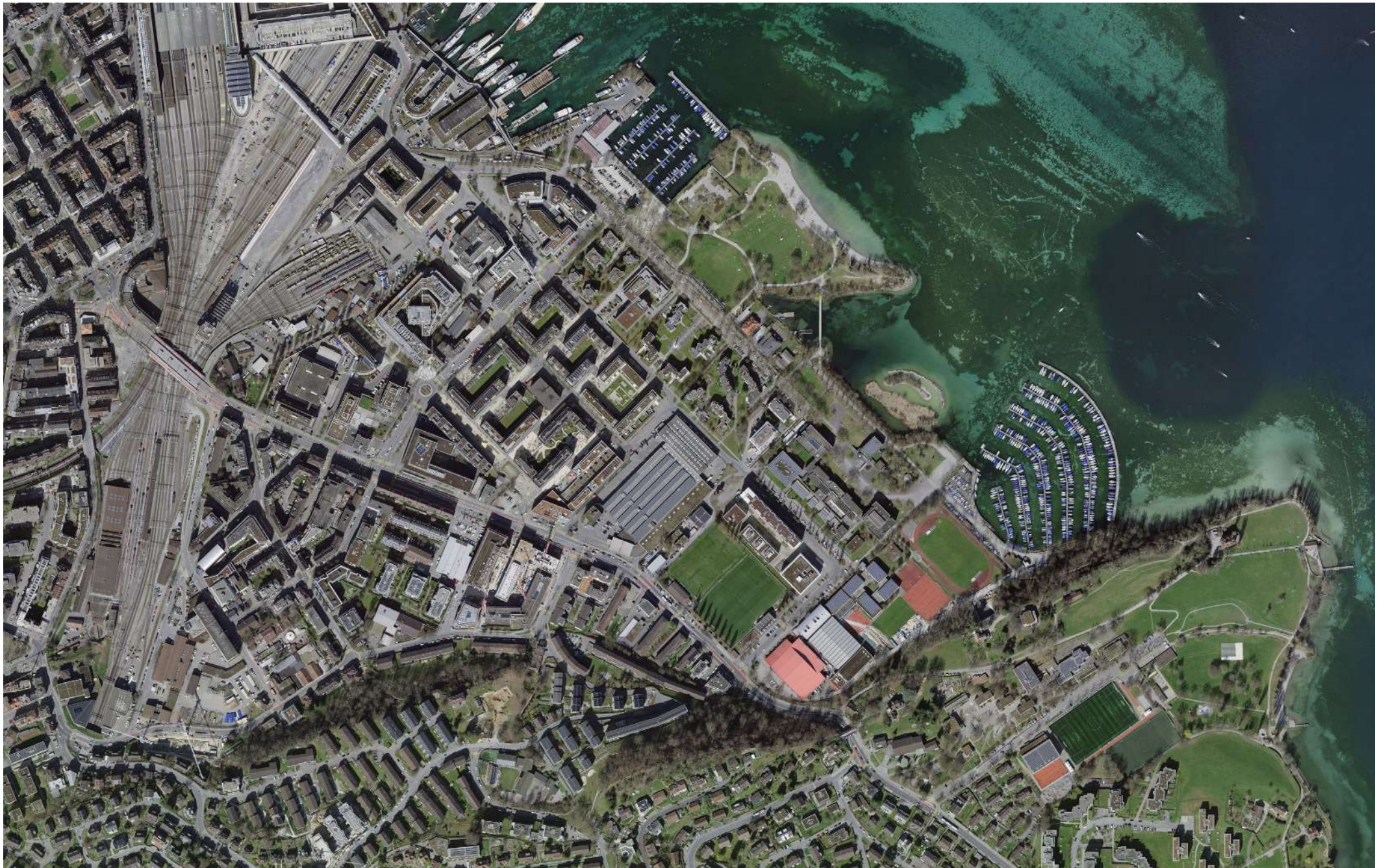
Future developments are only partially predictable. The beginning of the twenty-first century was marked by crises that will have a lasting influence on the development of our cities. Crises leave behind ruins, visible and invisible traces in the city and its residents. But they also represent opportunities because new cities have repeatedly grown back on ruins.

In 2020, „Postulat 401“ was submitted to the City Council of Lucerne, calling for a long-term vision for developing the vbl-Areal in the Tribtschen district. The City Council decided to initiate the long-term development process for the vbl-Areal no earlier than 2025.

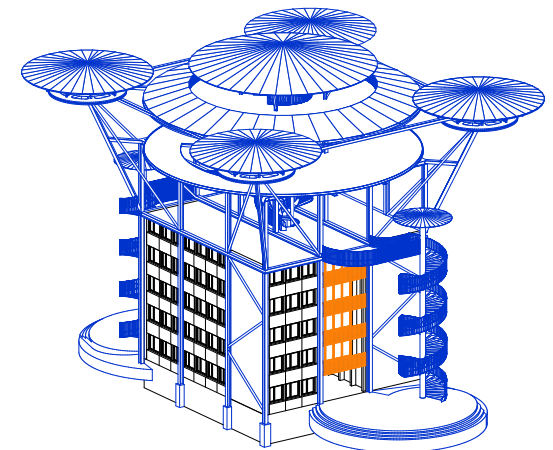
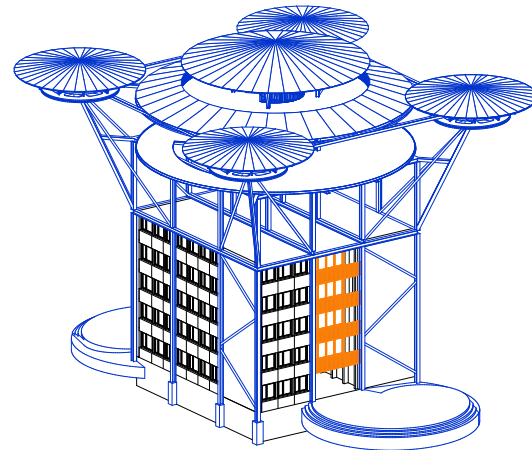
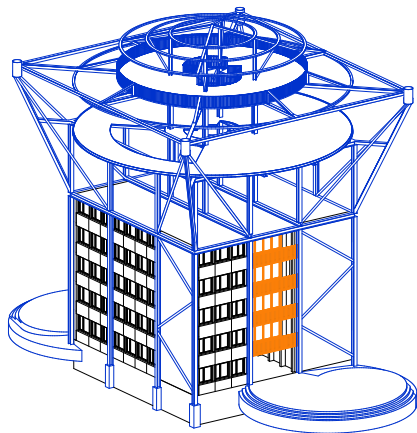
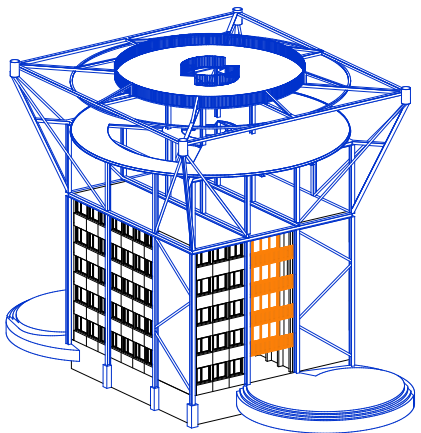
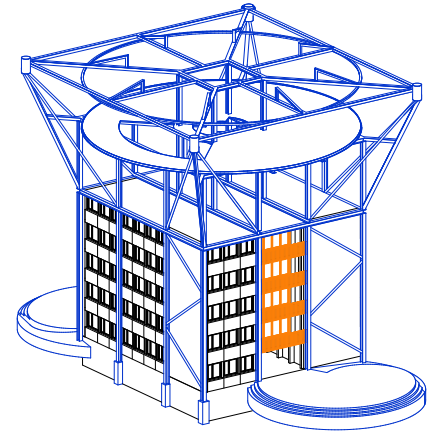
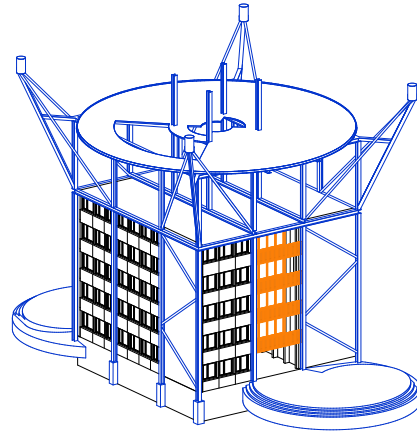
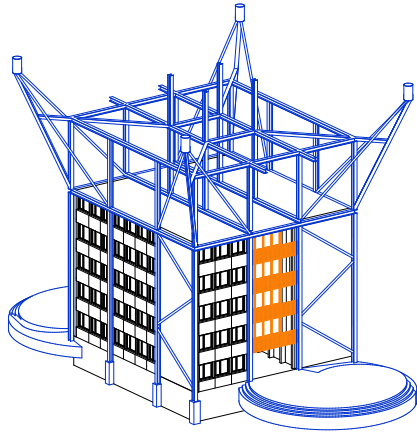
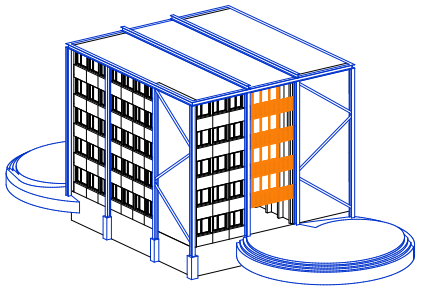
The initial political situation sets the stage for our semester assignment. Developed in collaboration with Pascal Hunkeler, Lucerne's municipal architect, this assignment will yield results that provide the City of Lucerne with valuable insights for future planning, studies, and architectural competitions. The site has a significant potential for future city development but no immediate need for action. Currently, it features a functional, yet architecturally unremarkable hall used by transport companies. Our goal is to envision possibilities for 2050, considering uncertainties and developing scenarios. Key questions include where and how we will live, how mobility will evolve, and what impacts this will have on the VBL and Tribtschen. Approaching the task with openness, we aim to implement coherent and precise scenarios into urban planning and architectural projects based on the initial situation described.

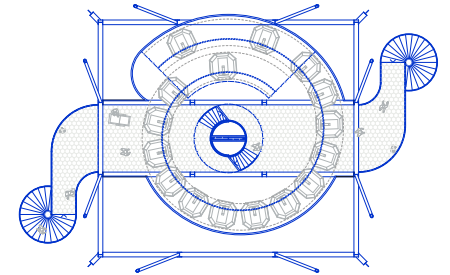
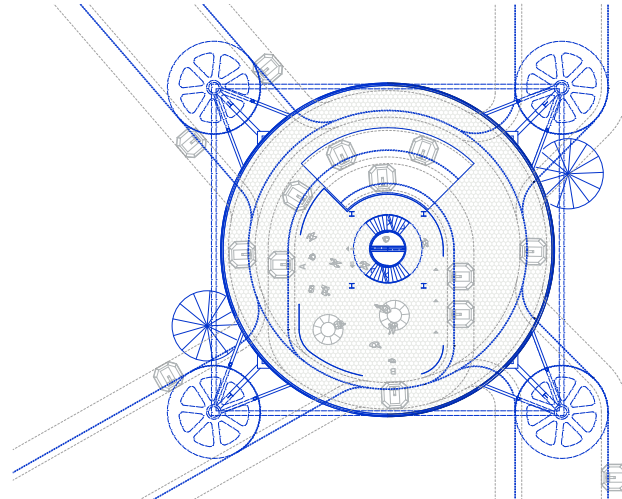
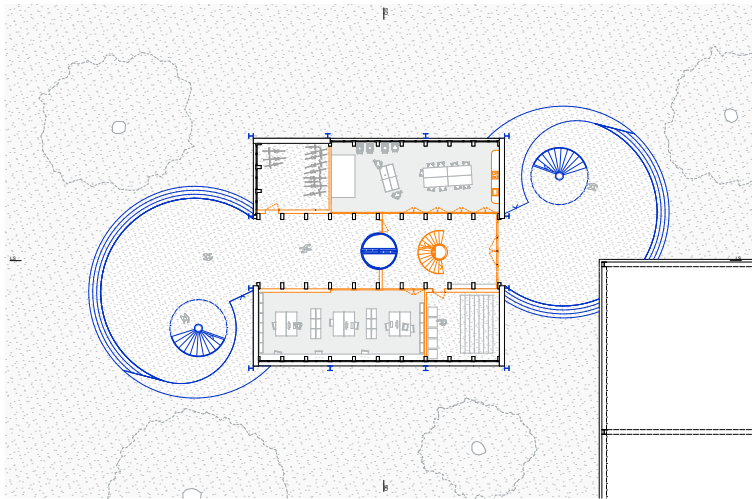


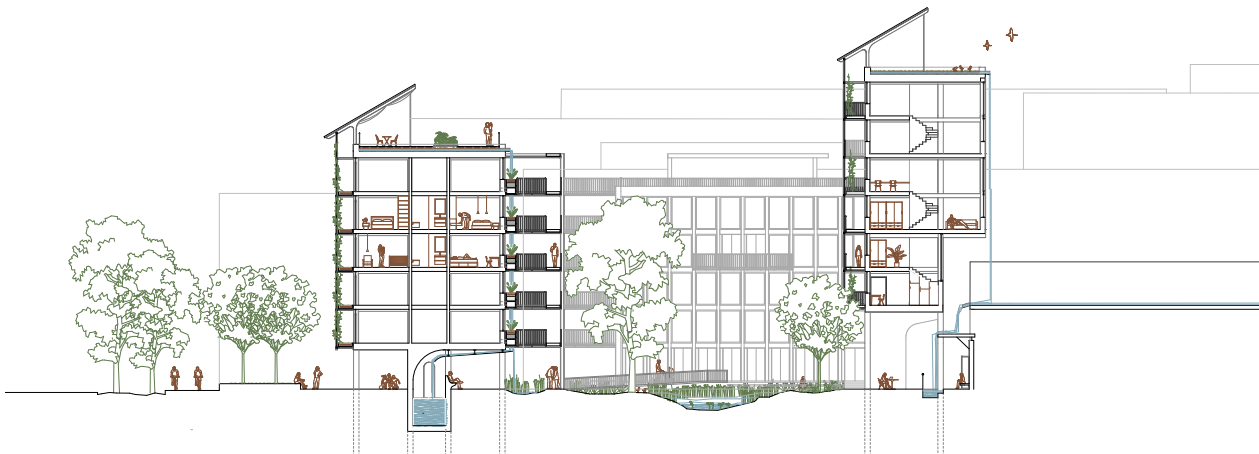
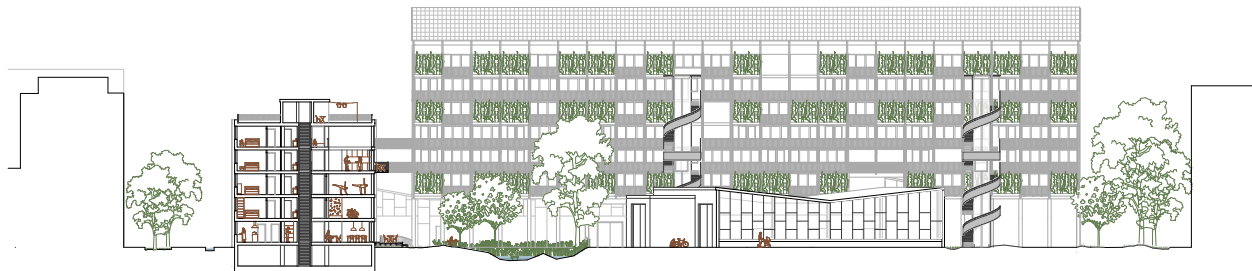
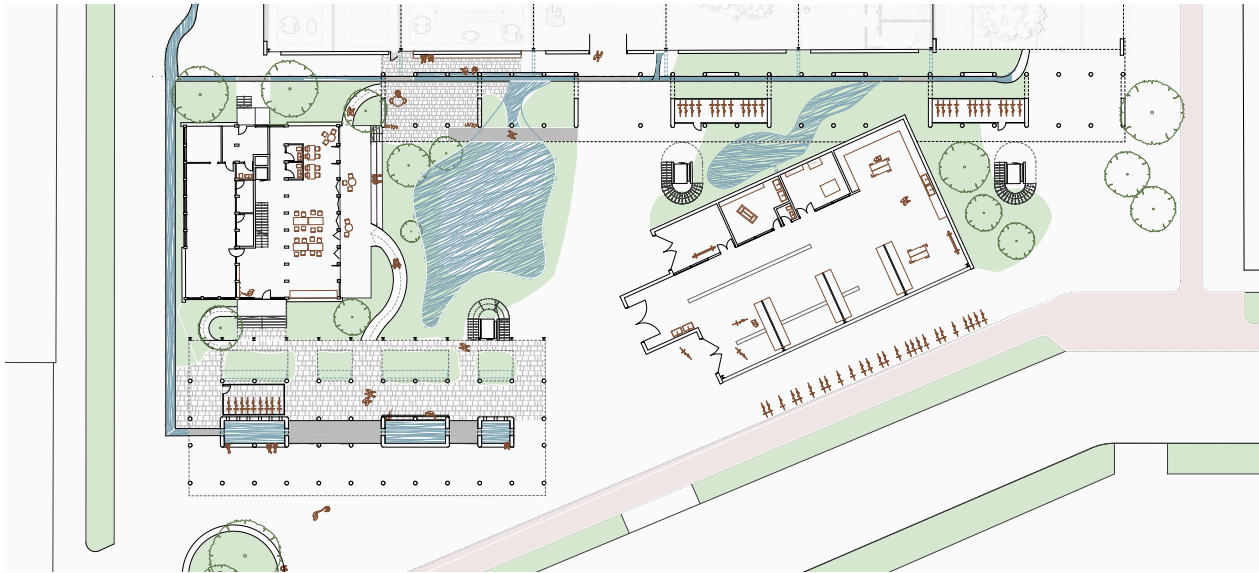
Planet City, Liam Young (2021)



Area of intervention, Lucerne - Tribschen, current situation







Asstrid Paulsson

